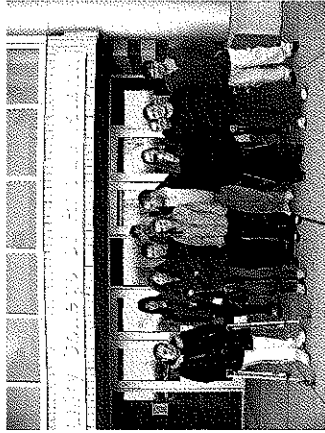


What is the RI Transition Academy at CCRI?

The RI Transition Academy at CCRI is an alternative high school program for 18 to 21 year-old students with disabilities that provides classroom and community instruction in an adult learning environment.

The program, based at the Community College of RI Knight Campus, the Village at Tanglewood Apartments, and in various community settings, utilizes a student-centered approach in teaching functional academics, independent living skills, self-advocacy, community involvement, and the skills necessary for seeking, obtaining and maintaining employment— the skills necessary for a successful satisfying life beyond high school.

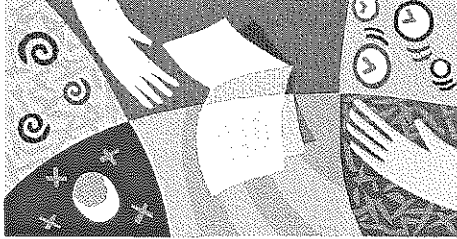


Most students participate for one school year. However, based on need and IEP Team recommendation, a student may return for an additional year.

We are a unique educational experience happening at the Community College of Rhode Island's Knight Campus in Warwick, the Tanglewood Village Apartment, in our partner businesses, and in the community that is RI!

The RI Transition Academy at CCRI

Moving Forward....



For further information, please contact

Therese Curran
Program Administrator
144 Bignall Street
Warwick, RI 02888

Phone: 401.941.8353 ext 124

Fax: 401.941.8535

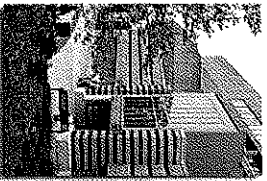
Email: Curranwbc@aol.com

A Program of the West Bay Collaborative Regional Transition Center

At the RI Transition Academy at CCRI, students will...

- ◇ gain the vocational skills and confidence to get a job or keep a job with minimal or time limited supports;

- ◇ acquire the functional and daily living skills necessary to reach their potential independence;

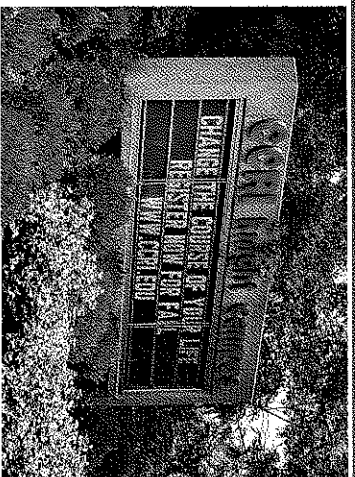


The Transition Academy at CCRI

- ◇ reinforce and improve academic skills to be better prepared for the workplace or post secondary training programs;

- ◇ develop the social skills and self-confidence to find success with interpersonal relationships at work and at home;

- ◇ develop confidence, self-advocacy skills, and self-awareness to know the rights and responsibilities of adulthood, know themselves, and know how to seek assistance if needed.



Who should apply to the RI Transition Academy at CCRI?

Students who...

- Are 18-20 years-old, have an IEP and are currently enrolled in school;
- Are eligible for services from the RI Office of Rehabilitation Services (ORS);
- Are not prepared to graduate but want to leave the high school building or graduate with peers;
- Are motivated to attend and fully participate in program activities;
- Can follow the rules and expectations of a community college setting

The Application Process

- * IEP Team (student, parent, school personnel, ORS Counselor and others) determine need for continued services and recommend making application to the program
- * Application packet is completed and mailed from the district special education office
- * Students are interviewed by program personnel
- * Admission is not guaranteed

