



Stacey Aguiar, MPH, CHES  
Rhode Island

Learn the Signs.  
Act Early.



# Rhode Island overview

- Population 2014 estimate = 1,055,173
- Core cities
  - Central Falls
  - Pawtucket
  - Providence
  - Woonsocket
- One state health department; no local health departments



# Act Early Team

- Collaborated with Early Intervention Interagency Coordinating Council (ICC)
- Represented:

<b>RI Parent Information Network</b>	<b>Hasbro Children's Hospital</b>	<b>Early Intervention</b>	<b>Head Start</b>
<b>Family</b>	<b>Pediatrician</b>	<b>Family Voices</b>	<b>Sherlock Center on Disabilities</b>
<b>Department of Education</b>	<b>Department of Human Services</b>	<b>Department of Children, Youth and Families</b>	<b>Department of Health</b>
<b>State Legislator</b>	<b>Medicaid</b>		

- Meet bi-monthly
  - Next/first meeting: May 28, 2015



# Race to the Top Early Learning Challenge

---

- RI was one of nine states awarded \$50 million over four years to improve early learning and developmental opportunities for RI's young children
- Five participating Rhode Island state agencies share responsibility for achieving grant outcomes, Department of Elementary & Secondary Education (RIDE), Department of Human Services (DHS), Department of Children, Youth and Families (DCYF), Executive Offices of Health and Human Services (OHHS), and Department of Health (HEALTH).




# Screening to Succeed Overview

- Rhode Island's Early Periodic Screening and Diagnosis Treatment (EPSDT) Schedule requires and American Academy of Pediatrics recommends standardized developmental screening at 9, 18 & 30 months, as well as standardized Autism screening at 18 & 24 months
- HEALTH's scope of work:
  - Provide funding and staff support to primary care practices to implement a system of standardized, electronic developmental screening
  - Partners
    - RI Chapter of the American Academy of Pediatrics
    - Healthcentric Advisors



# 1: Primary care practices receive

**Technical assistance** to implement an electronic system of standardized developmental screening using the Survey of Wellbeing of Young Children (SWYC). More information about the SWYC can be found here: [www.theswyc.org](http://www.theswyc.org).



**SWYC:**  
**9 months**

9 months, 0 days to 11 months, 31 days  
v2.02 3/31/13

Child's Name: \_\_\_\_\_

Birth Date: \_\_\_\_\_

Today's Date: \_\_\_\_\_

---

**DEVELOPMENTAL MILESTONES**

These questions are about your child's development. Please tell us how much your child is doing each of these things. If your child doesn't do something any more, choose the answer that describes how much he or she used to do it. Please be sure to answer ALL the questions.

	Not Yet	Somewhat	Very Much
Holds up arms to be picked up	⊙	⊙	⊙
Gets into a sitting position by him or herself	⊙	⊙	⊙
Picks up food and eats it	⊙	⊙	⊙
Pulls up to standing	⊙	⊙	⊙
Plays games like "peek-a-boo" or "pat-a-cake"	⊙	⊙	⊙
Calls you "mama" or "dada" or similar name	⊙	⊙	⊙
Looks around when you say things like "Where's your bottle?" or "Where's your blanket?"	⊙	⊙	⊙
Copies sounds that you make	⊙	⊙	⊙
Walks across a room without help	⊙	⊙	⊙
Follows directions like "Come here" or "Give me the ball"	⊙	⊙	⊙

---

**BABY PEDIATRIC SYMPTOM CHECKLIST (BPSIC)**

These questions are about your child's behavior. Think about what you would expect of other children the same age, and tell us how much each statement applies to your child.

	Not at all	Somewhat	Very Much
Does your child have a hard time being with new people?	⊙	⊙	⊙
Does your child have a hard time in new places?	⊙	⊙	⊙
Does your child have a hard time with change?	⊙	⊙	⊙
Does your child mind being held by other people?	⊙	⊙	⊙
Does your child cry a lot?	⊙	⊙	⊙
Does your child have a hard time calming down?	⊙	⊙	⊙
Is your child fussy or irritable?	⊙	⊙	⊙
Is it hard to comfort your child?	⊙	⊙	⊙
Is it hard to keep your child on a schedule or routine?	⊙	⊙	⊙
Is it hard to put your child to sleep?	⊙	⊙	⊙
Is it hard to get enough sleep because of your child?	⊙	⊙	⊙
Does your child have trouble staying asleep?	⊙	⊙	⊙

\*\*\*\*\* Please continue on the back \*\*\*\*\*

**PARENT'S CONCERNS**

	Not At All	Somewhat	Very Much
Do you have any concerns about your child's learning or development?	⊙	⊙	⊙
Do you have any concerns about your child's behavior?	⊙	⊙	⊙

---

**FAMILY QUESTIONS**

Because family members can have a big impact on your child's development, please answer a few questions about your family below:

	Yes	No
1 Does anyone smoke tobacco at home?	⊙	⊙
2 In the last year, have you ever drunk alcohol or used drugs more than you meant to?	⊙	⊙
3 Have you felt you wanted or needed to cut down on your drinking or drug use in the last year?	⊙	⊙
4 Has a family member's drinking or drug use ever had a bad effect on your child?	⊙	⊙
5 In the past month was there any day when you or anyone in your family went hungry because you did not have enough money for food?	⊙	⊙

---

Over the past two weeks, how often have you been bothered by any of the following problems?

	Not at all	Several days	More than half the days	Nearly every day
6 Having little interest or pleasure in doing things?	⊙	⊙	⊙	⊙
7 Feeling down, depressed, or hopeless?	⊙	⊙	⊙	⊙

---

8 In general, how would you describe your relationship with your spouse/partner?	No tension ⊙	Some tension ⊙	A lot of tension ⊙	Not applicable ⊙
9 Do you and your partner work out arguments with:	No difficulty ⊙	Some difficulty ⊙	Great difficulty ⊙	Not applicable ⊙

copyright © www.theswyc.org 2013



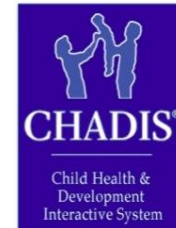
# Sections of the SWYC

- Developmental milestones
- Baby Pediatric Symptom Checklist (BPSC)/Preschool Pediatric Symptom Checklist (PPSC): Social/emotional development
- Parent Observation of Social Interactions (POSI): Autism specific screen for 18, 24, & 30 month tools
- Parent concern
- Family risk factors



## 2/3: Primary care practices receive

- A 1 year user license to access the **Child Health & Development Interactive System (CHADIS)**, a web-based screening, diagnostic and management system that administers and analyzes pre-visit, online questionnaires completed by parents, teens, teachers and providers. More information about CHADIS can be found here: [www.chadis.com](http://www.chadis.com).
  - Over 75 questionnaires from which to choose, ages 0-21
  - Auto-assignment set up
  - Parent, teen or teacher finish online from home, or in the waiting/exam room on a device
  - Automatically scores results
  - Clinical staff reviews results in real time
- **Tablets and accessories** that allow patients' families and clinical staff to access and utilize CHADIS.





## 4: Primary care practices receive

**Bonuses and technical assistance** to increase developmental screening rates.

- Screen 50% of eligible patients at 6 months
- Screen 80% of eligible patients at 12 months
- Total = \$2,500-\$4,500



# 5: Primary care practices receive

**Staff support** to refer and link patients and families to appropriate covered services that are available and accessible.

- 1 • Referral and Resource Specialist receives referral from primary care provider
- 2 • Referral and Resources Specialist calls family to get additional information
- 3 • Referral and Resource Specialist makes referral and notifies the practice of the referral made
- 4 • Referral resource notifies practice of family's status



# Referrals

- Referrals often come as a result of screening, however providers send referrals for concerns unrelated to screening as well
- The majority of the referrals indicate a need for assistance in the following areas:
  - Behavior
  - Development
  - Autism
  - Parental depression
  - Partner conflict
  - Parental support
- Many of the referrals are for multiple needs



# 6. Primary care practices receive

## Evidence-based community resources

- Mental health consultation
  - Doc-to-doc consultation
  - Brief family consultation
  - Assessment with the family
- Parent education
  - Incredible Years Toddler Parenting Program
  - Family Check-up
- Reach Out and Read



# 7: Primary care practices receive

**Information kits** for families to understand developmental milestones and the importance of developmental screenings.

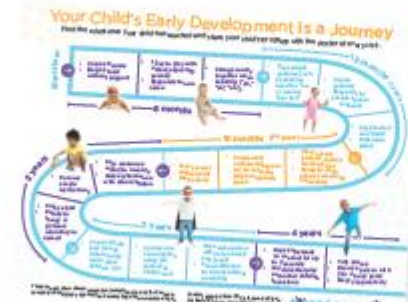
- Materials were customized from the Centers for Disease Control and Prevention's Learn the Signs. Act Early. More information about LTSAE can be found here:

[www.cdc.gov/actearly](http://www.cdc.gov/actearly).

Milestone moments  
booklet



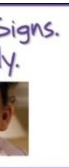
Milestone road map



Developmental  
screening brochure



BrightStars Postcard



# Primary Care Provider Outreach

- Implementing standardized, electronic screening in primary care practices
  - Children ages 0-3 years
  - Patient population of >25% on Medicaid with at least 25 Medicaid kids or <25% on Medicaid with at least 50 Medicaid kids.
- This translates into a target of:
  - 79 practices
  - Approximately 375 primary care providers (Note that this is an estimate because some providers work in more than one practice.)
  - 13,174 Medicaid children (27,679 total children), with a target of reaching 90% of these children screened by October of 2016



# Work completed to date

- 19 primary care practices screening through Screening to Succeed to increase developmental screening and referral rates
- Outreached to an additional 17 practices
- Referrals
  - August 28, 2014 to April 30, 2015= 337 referrals from 11 practices
- Developing contracts to provide on-site or community-based resources for participating practices who show a need for:
  - Mental health consultation (4 practices)
  - Parent education (5 practices)
- KIDNET and Child Health and Development Interactive System (CHADIS) interface is live



# Next Steps

---

- Move practices in training to full implementation
- Provide evidence-based community resources
- Continue to provide support through technical assistance and continuous quality improvement (i.e. increase screening and referral rates)
- Recruitment of practices





# Questions

---

- For more information, please contact:
  - Stacey Aguiar
    - 401-222-1087
    - [stacey.aguiar@health.ri.gov](mailto:stacey.aguiar@health.ri.gov)

