

ENGAGING THE WIND RIVER INDIAN RESERVATION IN WYOMING'S TITLE V NEEDS ASSESSMENT

Association of Maternal and Child Health
Programs Needs Assessment Training
January 7, 2014

Wyoming Needs Assessment Processes

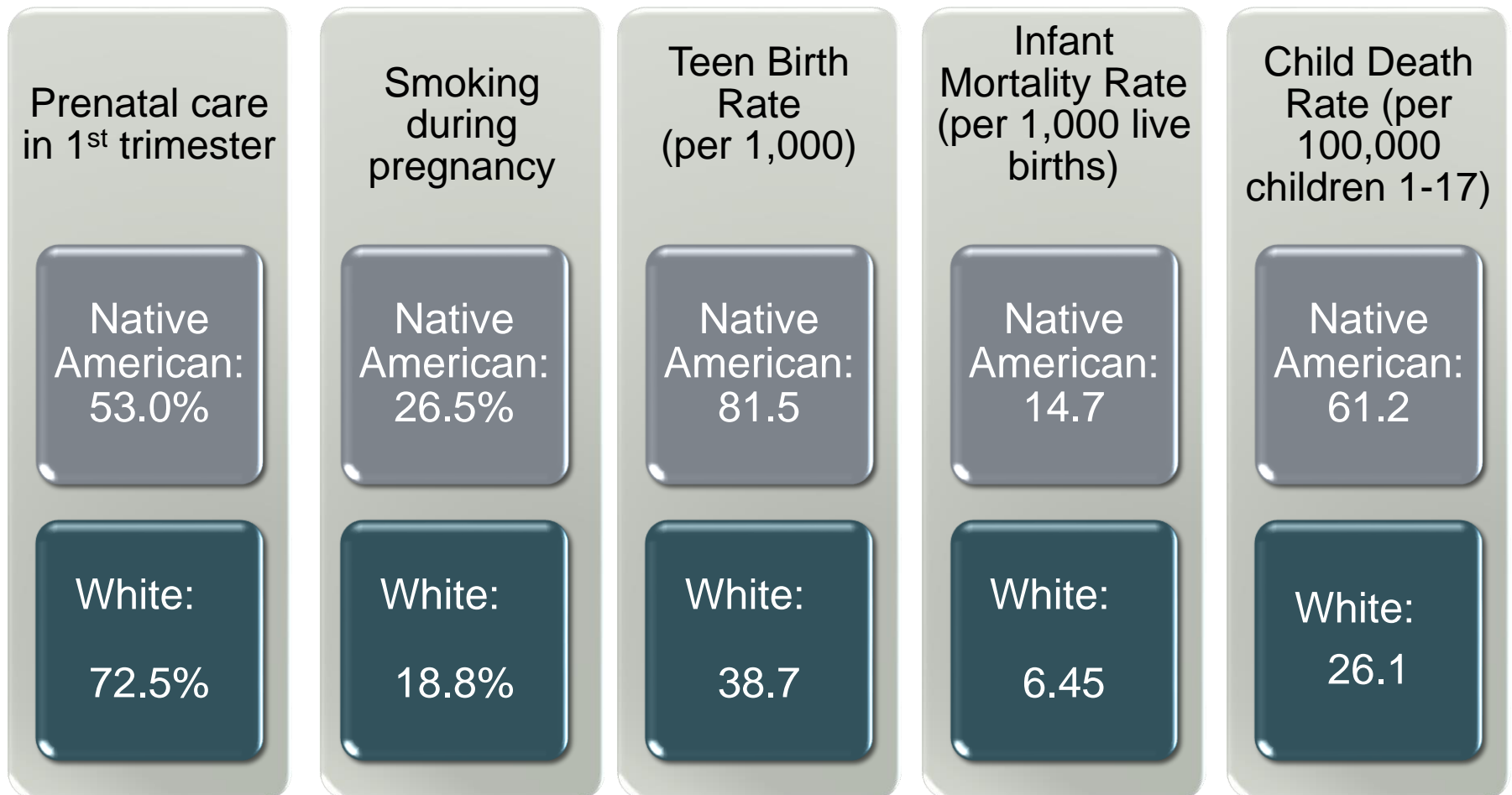
Phase One

- Gathering of existing data
- Statewide Stakeholder Survey
- Community Meetings – Counties selected to be representative of the state
 - Wind River Indian Reservation within a county that was selected, but treated as a unique location

A Few Definitions

- Engage: to begin and carry on an enterprise or activity; to do or take part in something; to give attention to something
- Stakeholder: An entity that can be affected by the results of that in which they are said to be stakeholders, i.e. that in which they have a stake

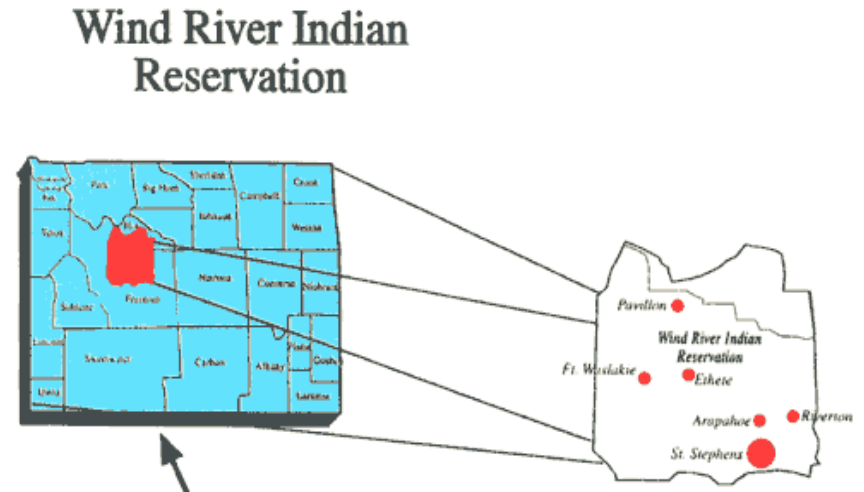
MCH Health Inequity in Wyoming – What's at stake



Source: Wyoming Vital Records 2007 – 2011 Data

Wind River Indian Reservation

- The only Indian Reservation in Wyoming
 - Northern Arapaho
 - Eastern Shoshone
- 2.2 million acres-7th largest American Indian Reservation in the U.S.
 - ~4,000 Eastern Shoshone
 - ~9,600 Northern Arapaho



Individualistic Culture

- More emphasis on ME than WE
- Task orientated
- Emphasis is on individual accomplishments, competitive, strive to win
- Short term relationships, fast paced job, “Keeping up with the Joneses”, quick results
- Task outcomes are the priority



Collectivist Culture

- We is more important than Me
- Relationship orientated
- Emphasis is on group, rather than the individual
- Long term relationships, personal, maintaining good relations, Focus on what is right and based on trust.
- Not worrying about tasks, process & outcomes are priority

Community Perspective on State Identifying Health Issues

- Relationship is primary
 - Identifying past issues, approaches, relationships
 - Active listening, listening without judgment
 - Circle (learning, exploring, participating)
 - Meeting people where they are
 - Identifying strengths within the community

Community Perspective on State Identifying Health Issues

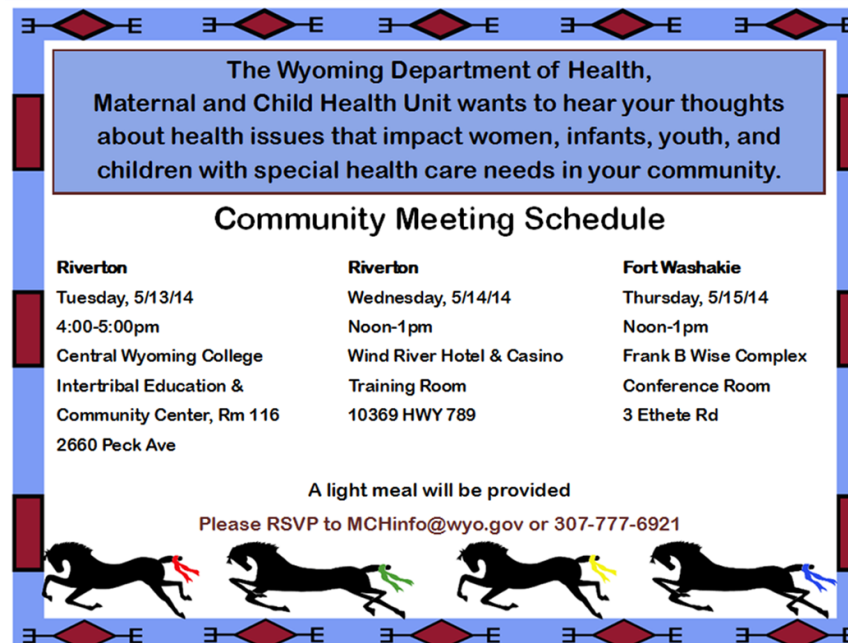
- Data and issues are secondary
 - Concerns are localized, what's important to community
 - Cultural awareness/language (ex. risks, factors, death)
 - Sharing stories (more to the story)
 - Solutions are a blank page

Community Meetings

- 2 meetings each located on the Wind River Indian Reservation
 - Casino in meeting space
 - Community buildings
 - Asked tribes where to host the meetings and when
- Meetings held at noon - working lunch
 - Food helps build relationships 😊

Getting the Word Out

- Personal networking explaining the meeting purpose ask for help in gaining participation
- Partners able further reach out for improve attendance
- Flyer designed by member of the community




The Wyoming Department of Health,
Maternal and Child Health Unit wants to hear your thoughts
about health issues that impact women, infants, youth, and
children with special health care needs in your community.

Community Meeting Schedule

Riverton	Riverton	Fort Washakie
Tuesday, 5/13/14	Wednesday, 5/14/14	Thursday, 5/15/14
4:00-5:00pm	Noon-1pm	Noon-1pm
Central Wyoming College Intertribal Education & Community Center, Rm 116 2660 Peck Ave	Wind River Hotel & Casino Training Room 10369 HWY 789	Frank B Wise Complex Conference Room 3 Ethete Rd

A light meal will be provided
Please RSVP to MCHinfo@wyo.gov or 307-777-6921



Community Meeting Set Up

- Overview of the purpose of both needs assessment and of meeting
 - Clear statement that at this point we were listening-not addressing problems
- Smaller groups, not assigned seating/groups
- Semi-circles

Community Meeting Process

- Facilitator asked 2 questions about each population group (women & infants, children, adolescents, CSHCYN)
 - Barriers to health
 - Community strengths
- Took notes on flip charts – confirmed that the notes were reflective of statements
- Transcribed notes requested

Necessary Ingredients, Values for Community Engagement

- Development of strategies is community based
 - Community Input
 - Community Answers
- Coming in with an idea to develop the framework
 - Not handing over the manual as the framework

Follow Up

- Indicators presented will include section racial disparities
- Data shared with Tribal Health Departments and Tribal Epidemiology Center
- Tribal representation on population advisory groups to select final priorities and for strategic planning

Acknowledgements

- Charles Aragon, Jr
- Gary Collins
- Allison Sage
- Cathy Keen
- Jay and Heather Old Coyote
- Bruce Cook
- Eastern Shoshone Tribal Health Staff
- Northern Arapaho Tribal Health Staff
- Linda McElwain
- Amy Spieker
- Wy Department of Health MCH Program and Epi Staff

Contact Information

- Ashley Busacker, PhD
- Senior Epidemiology Advisor, MCH
- ashley.busacker@wyo.gov
- 307-777-6936